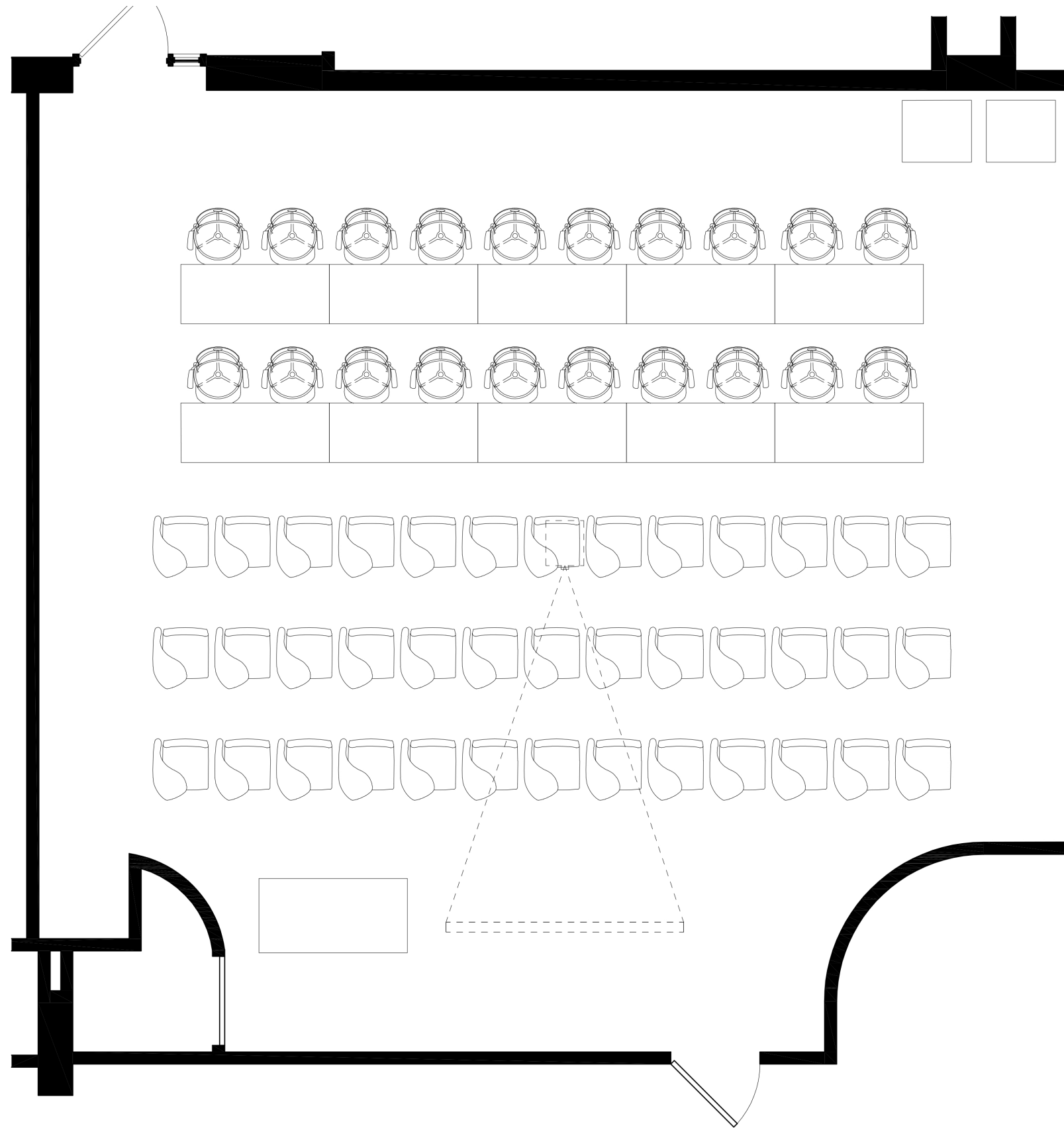


HARVARD



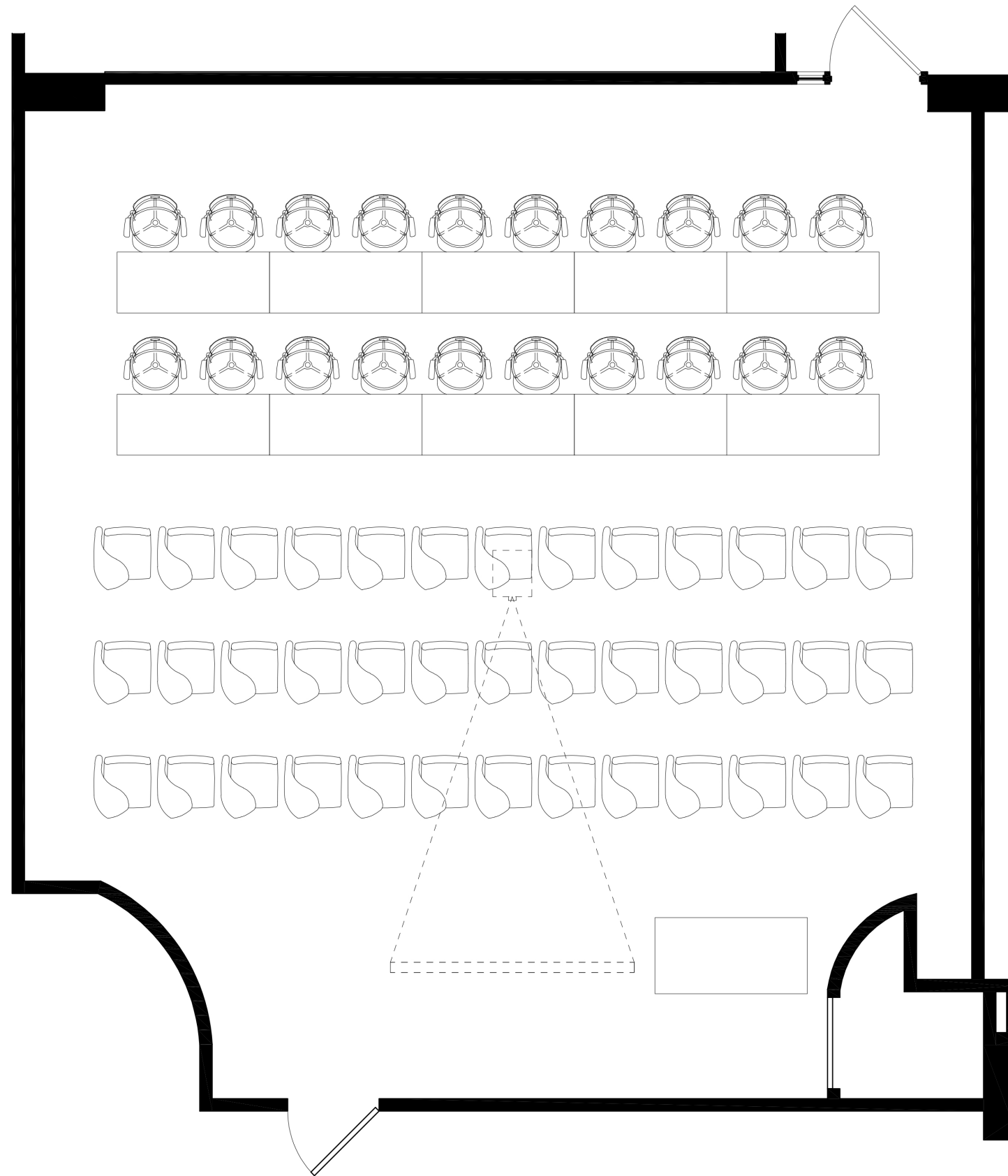
GRADUATE SCHOOL
OF EDUCATION

HGSE Spaces Available As
Classrooms for Registrar Scheduling
Academic Year 2024-2025



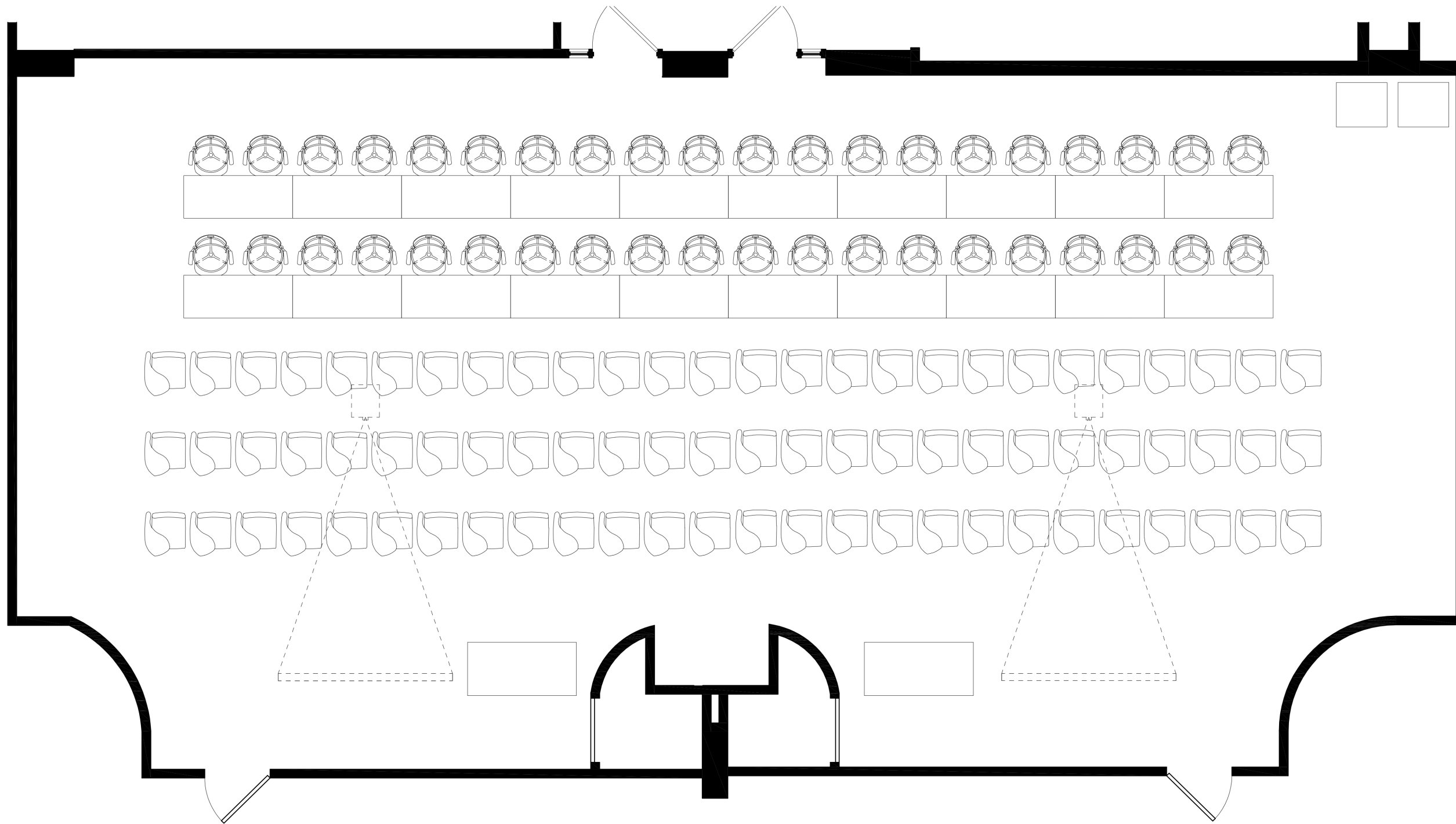
Gutman-302:

- 20 Stools
- 39 Tablet-arm Chairs
- 5 Flip-Top Tables 36" high
- 5 Flip-Top Tables 42" high
- Chairs, Stools & Tables are movable
- No Windows



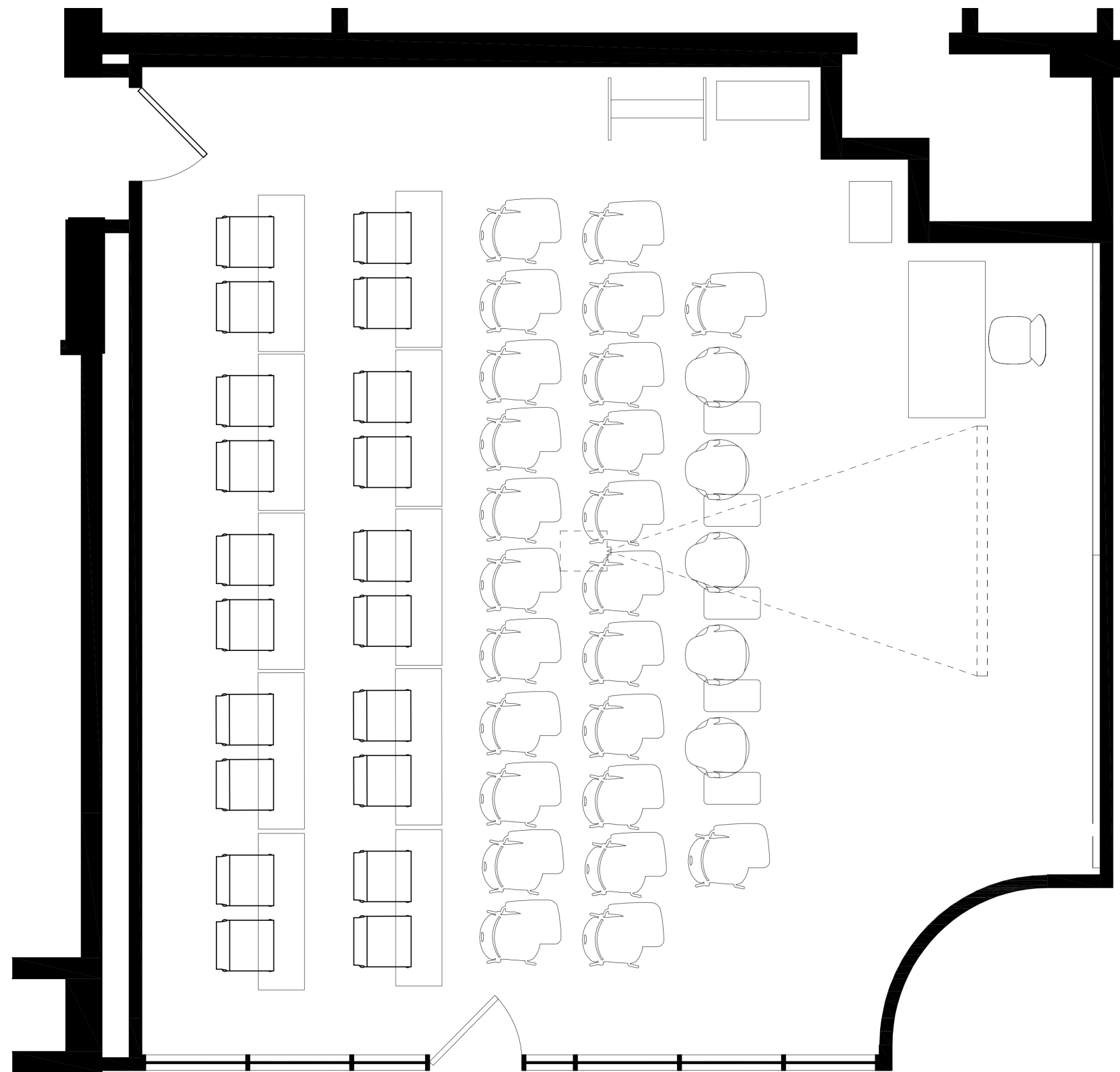
Gutman-303:

- 20 Stools
- 39 Tablet-arm Chairs
- 5 Flip-Top Tables 36" high
- 5 Flip-Top Tables 42" high
- Chairs, Stools & Tables are movable
- No Windows



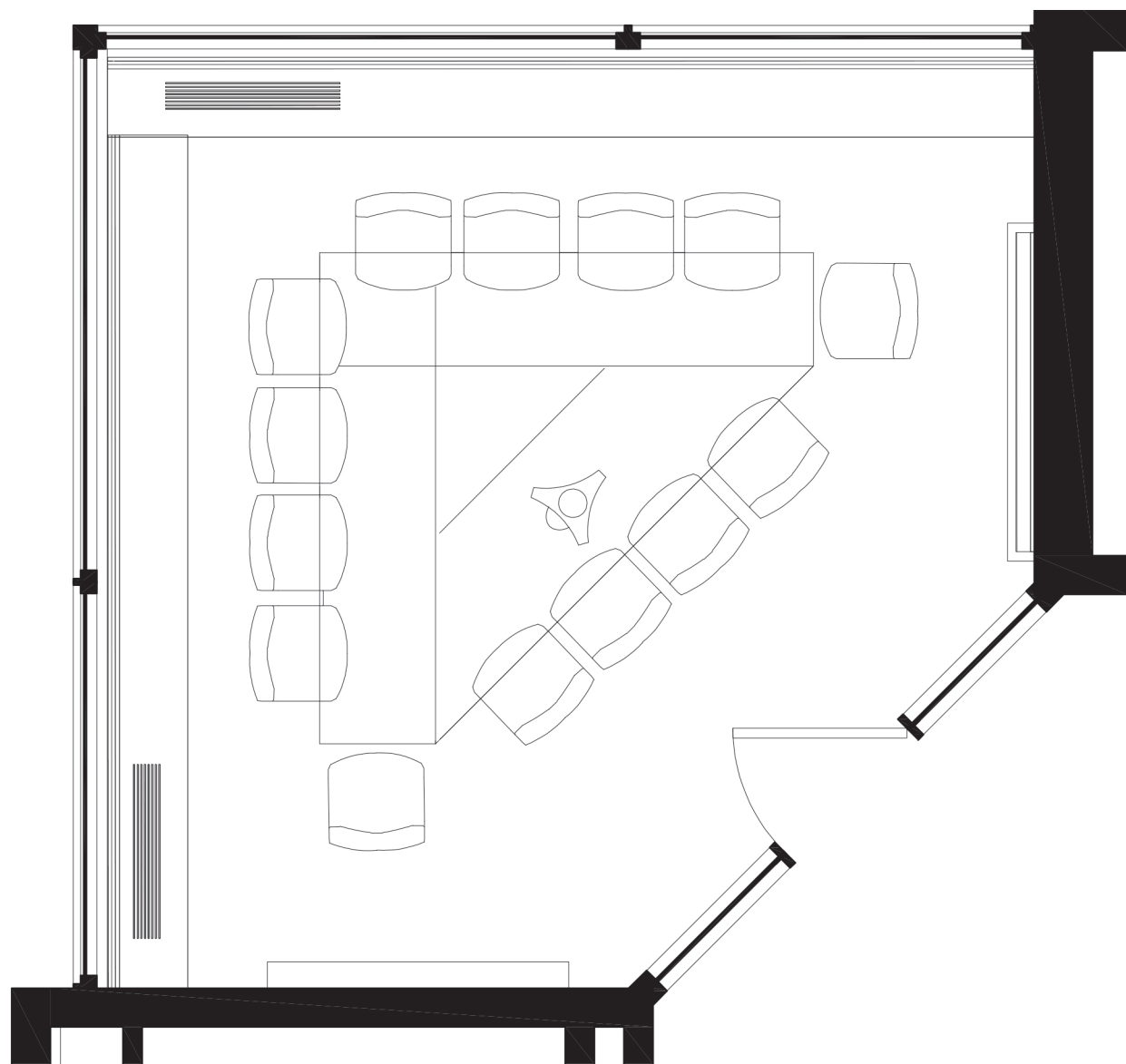
Gutman-302+303:

- 40 Stools
- 78 Tablet-arm Chairs
- 10 Flip-Top Tables 36" high
- 10 Flip-Top Tables 42" high
- Chairs, Stools & Tables are movable
- No Windows



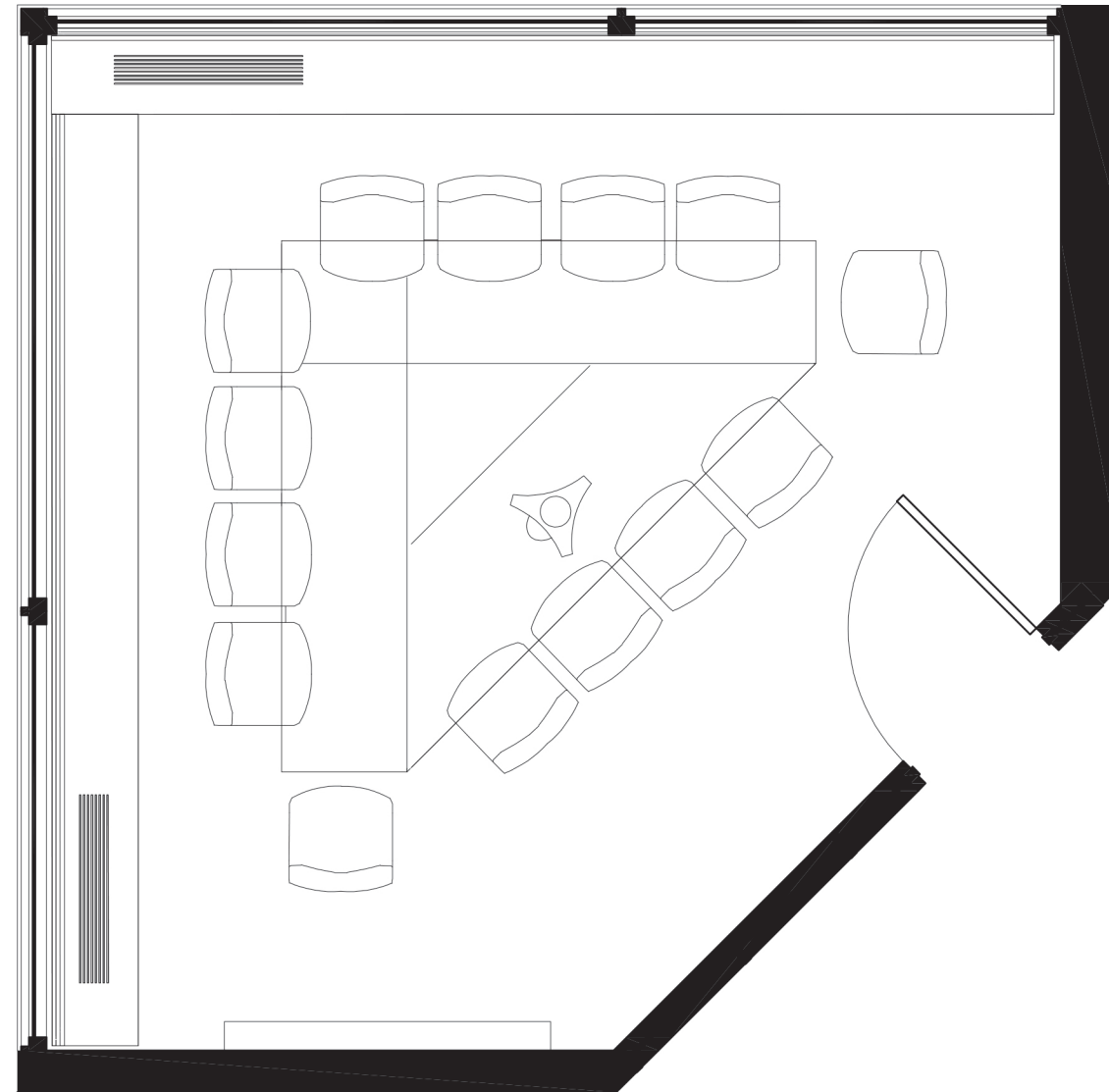
Gutman-305:

- 20 Stools
- 24 Tablet-arm Chairs
- 5 Ambidextrous Tablet-arm Chairs
- 10 Flip-Top Tables 36" high
- Chairs, Stools & Tables are movable
- No Windows



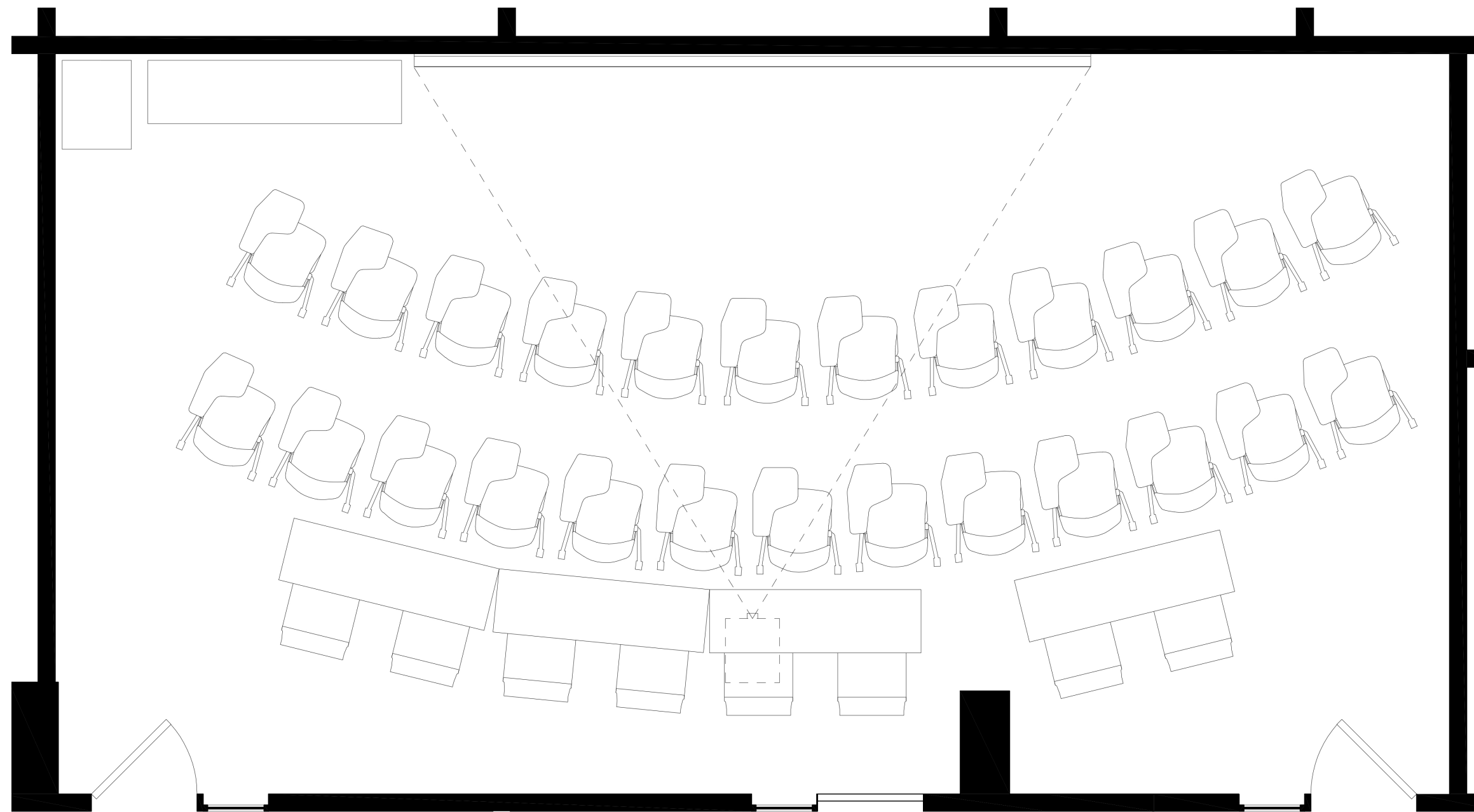
Gutman-350:

- 14 Chairs
- Chairs are movable
- Windows are present



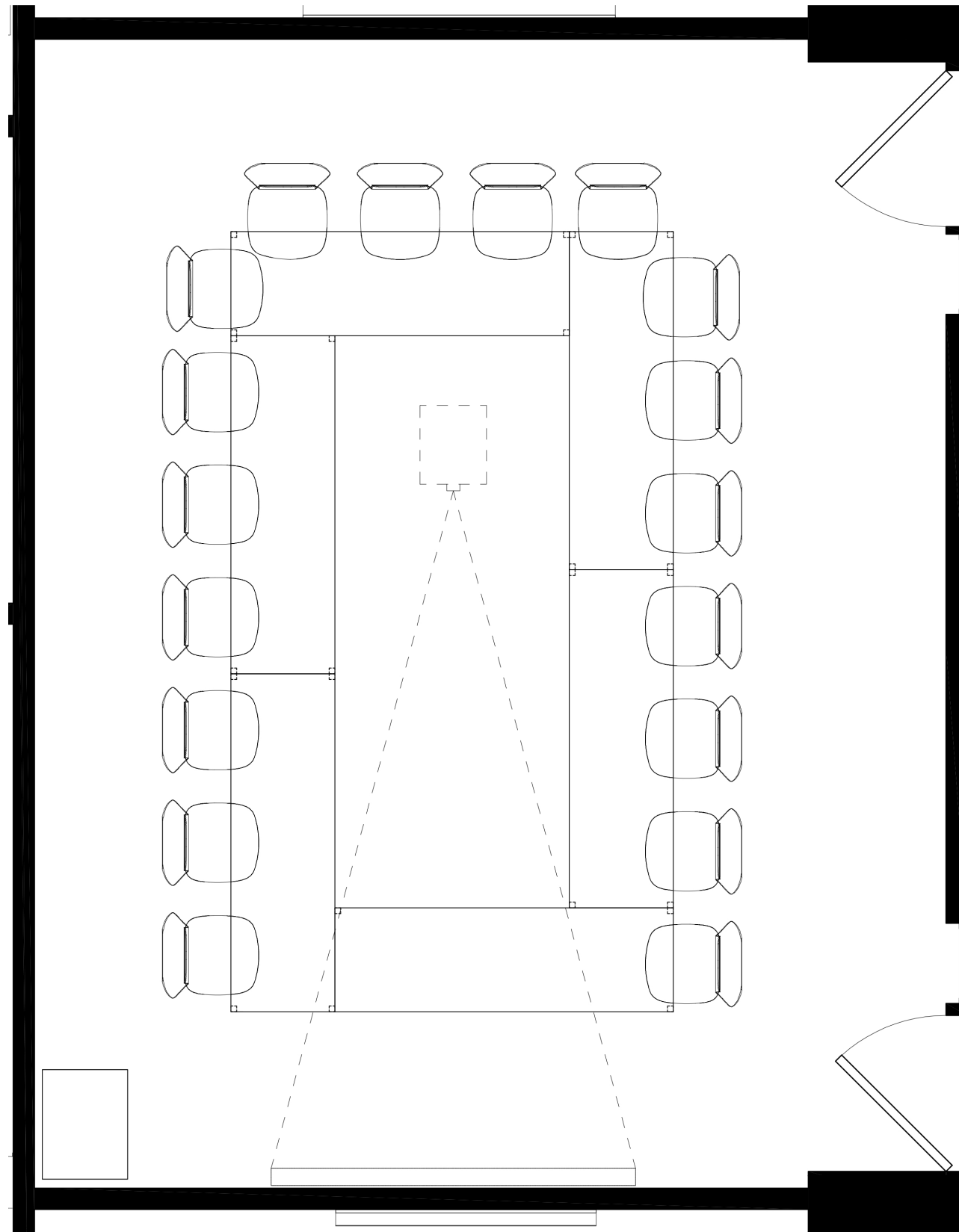
Gutman-437:

- 14 Chairs
- Chairs are movable
- Windows are present



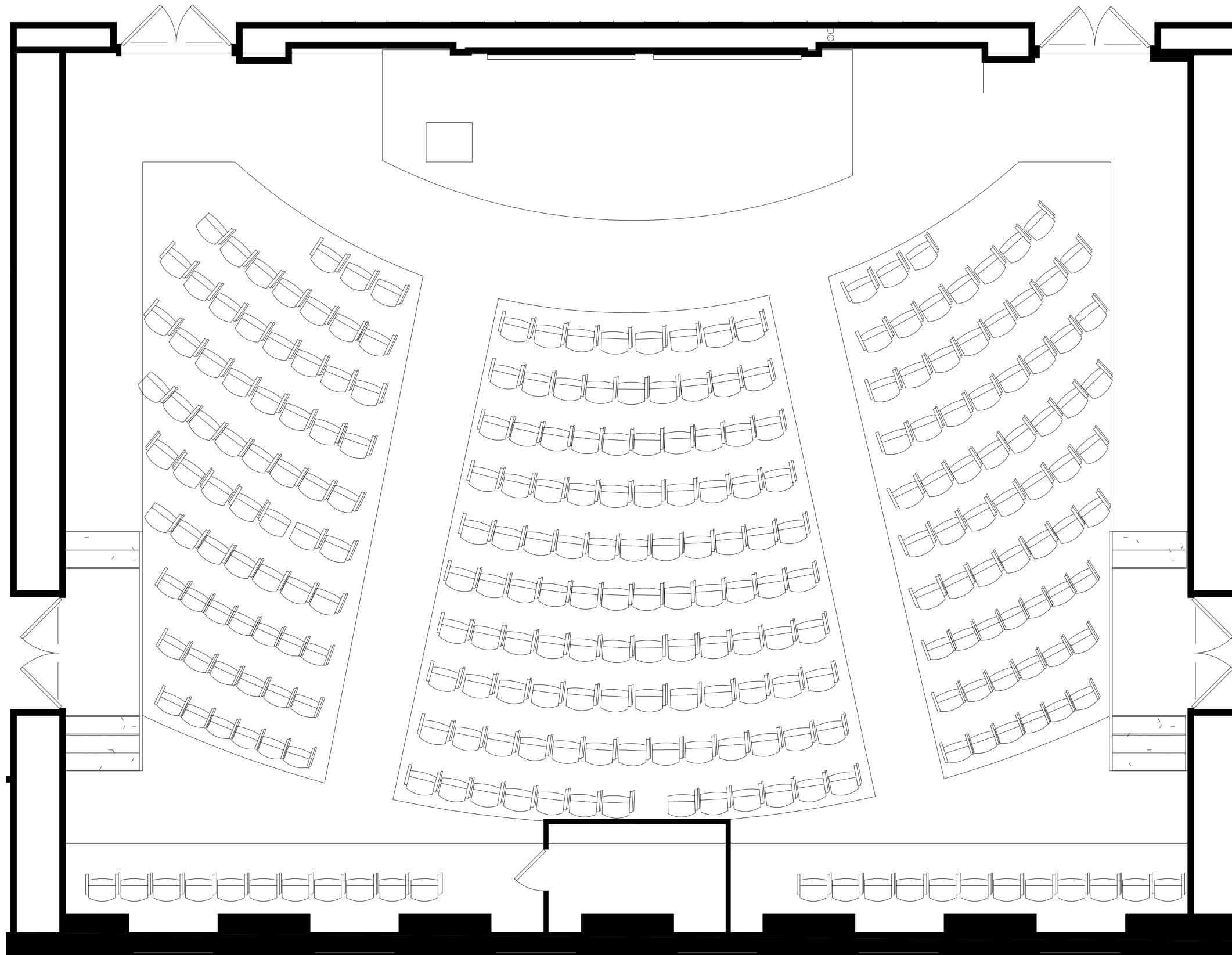
Gutman-440:

- 25 Tablet-arm Chairs
- 4 Flip-top Tables 36" high
- 8 Stools
- Chairs, Stools & Tables are movable
- No Windows



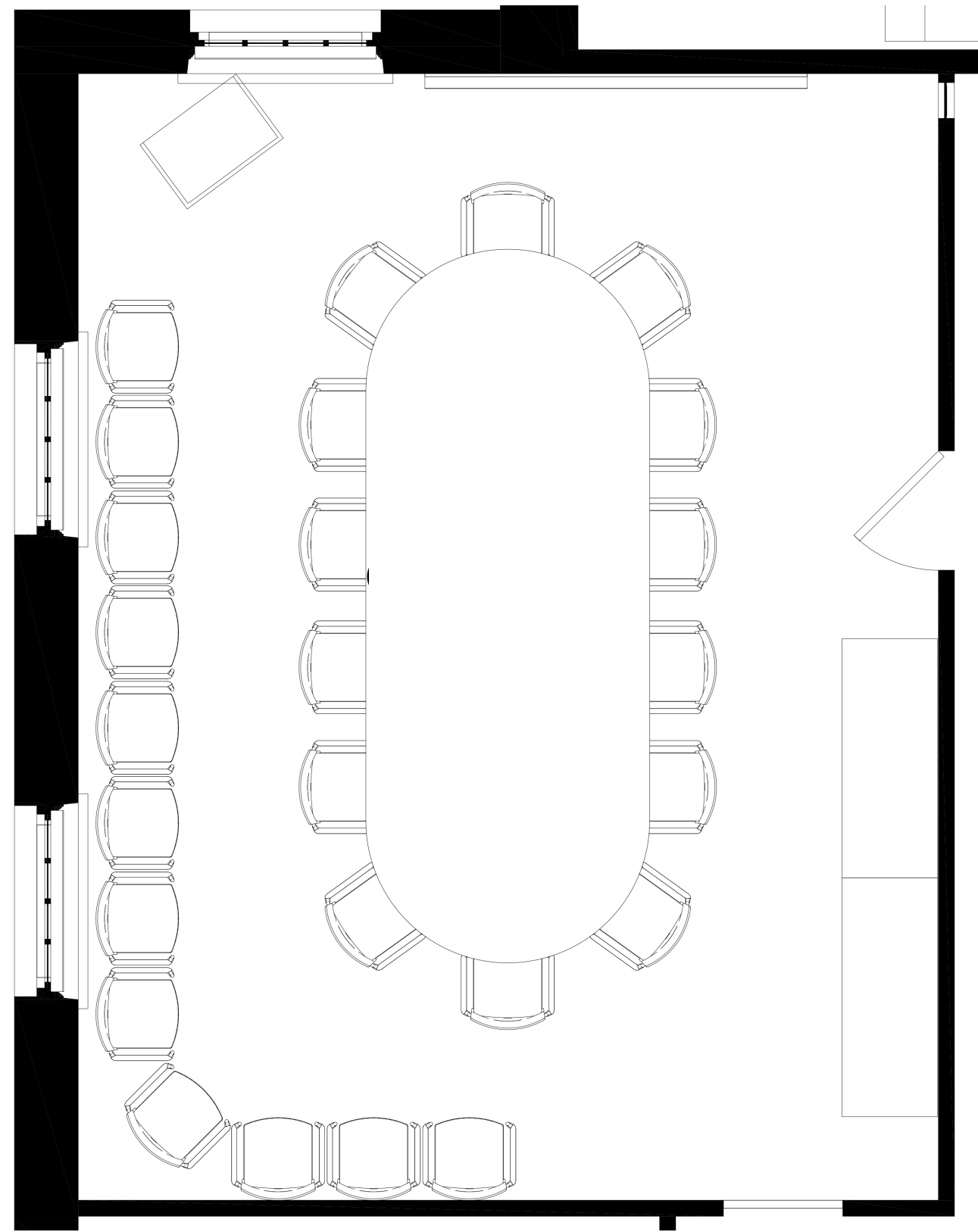
Gutman-404:

- 18 Chairs
- 6 Tables
- Chairs are movable
- No Windows



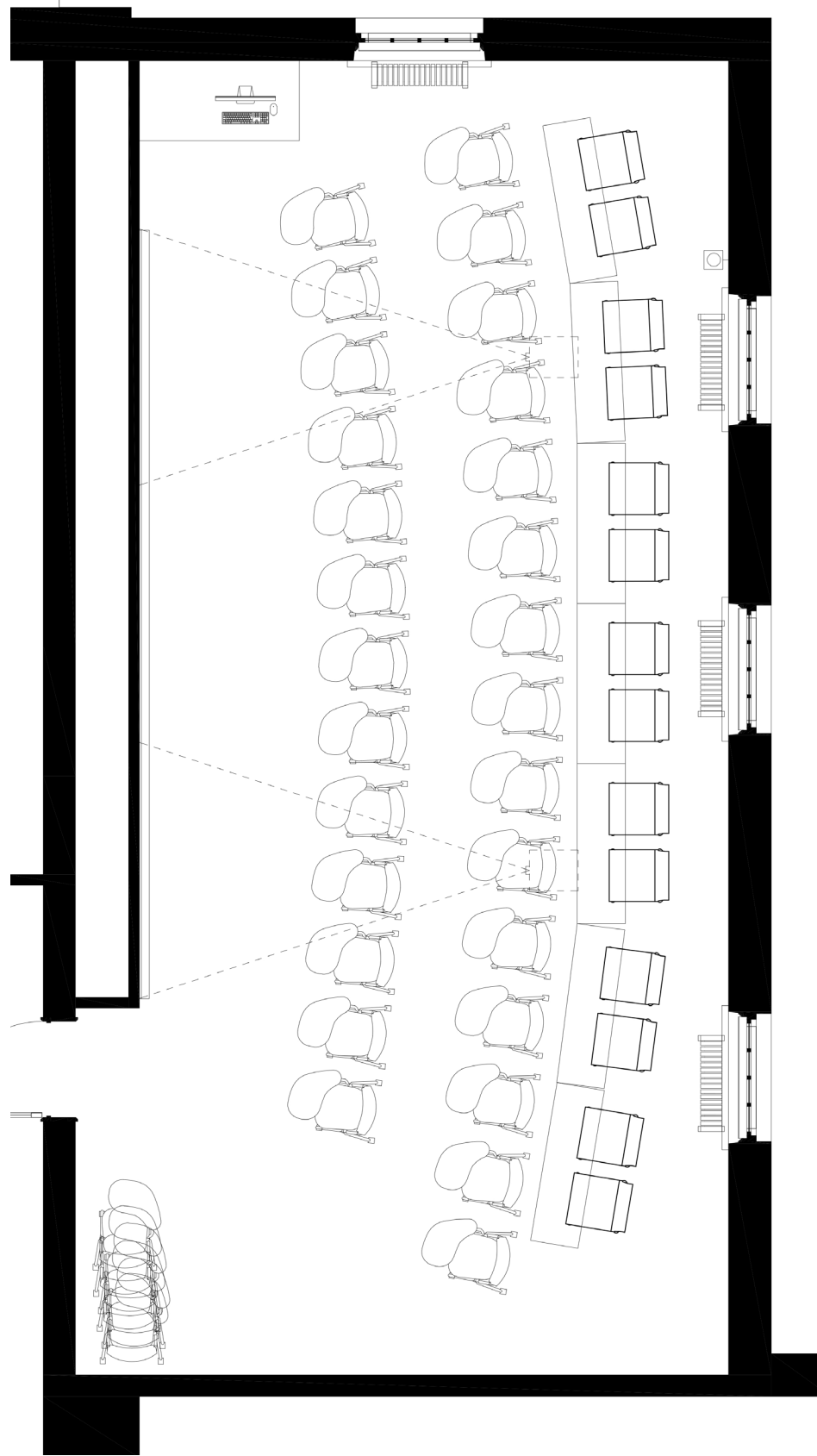
Askwith Hall:

- 268 Seats
- Seats are fixed



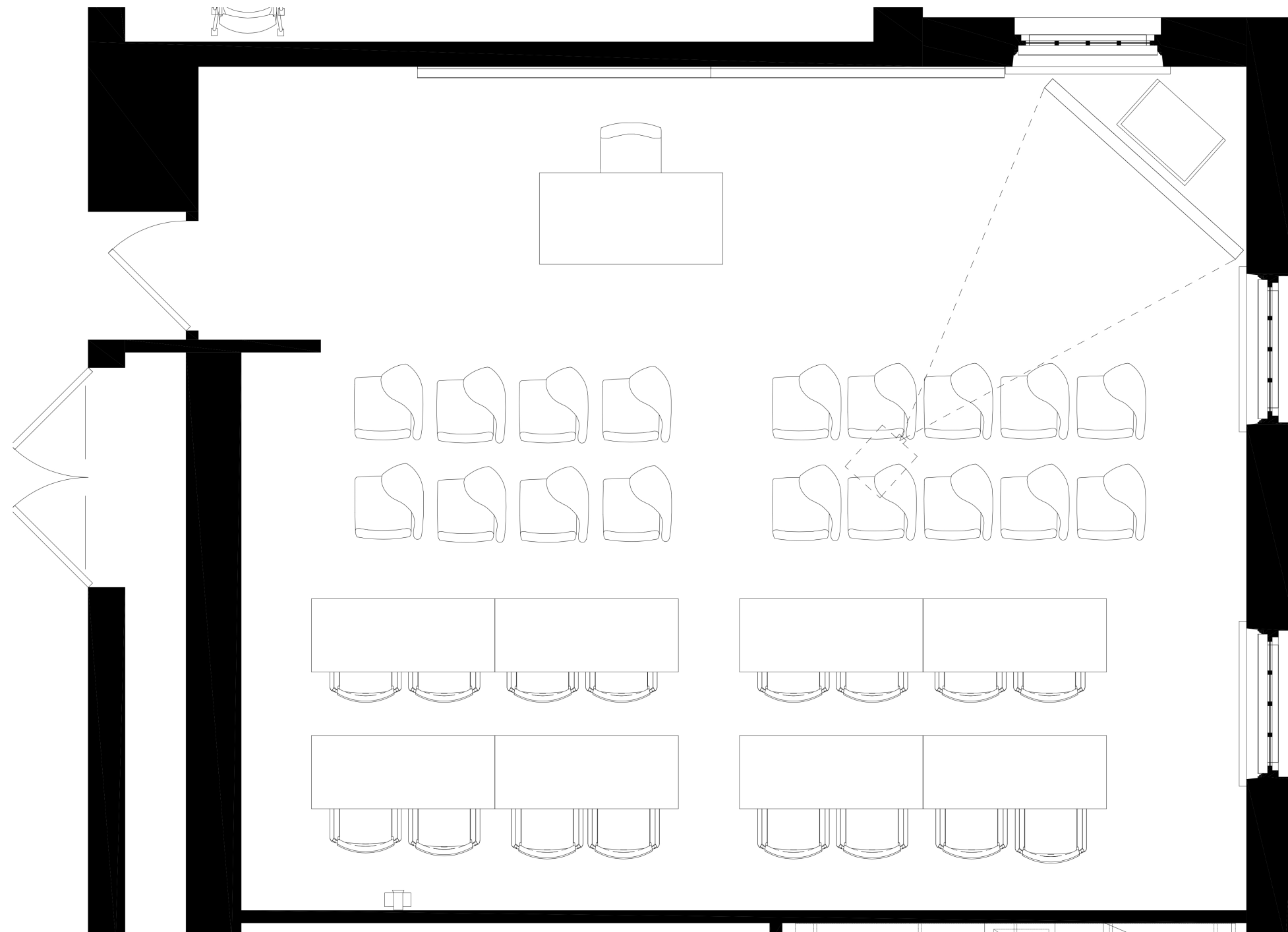
Longfellow-207:

- 26 Chairs
- Conference Table
- 2 Side-Tables
- Chairs are movable
- Windows are present



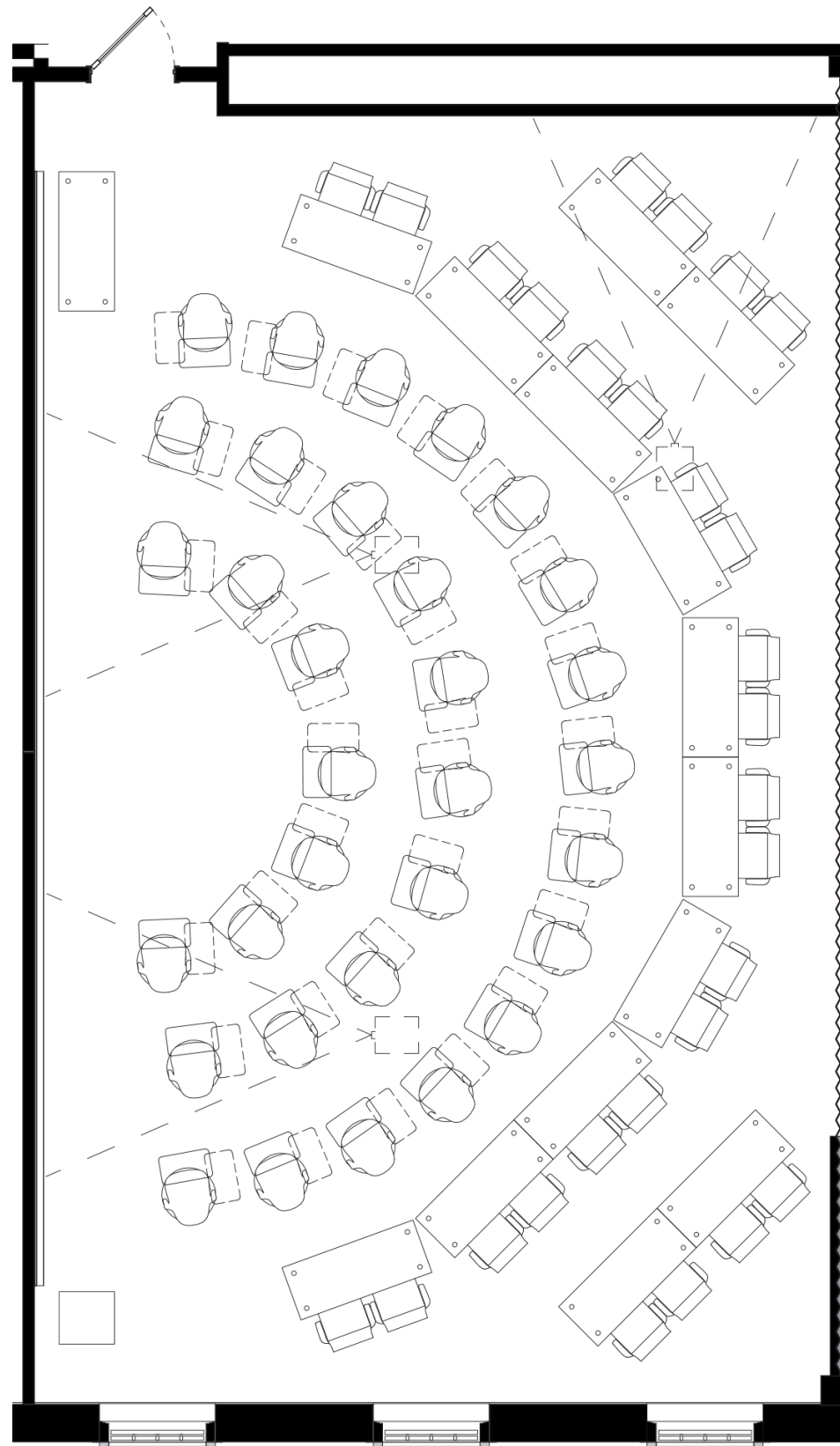
Longfellow-228:

- 28 Tablet-arm Chairs
- 6 Stacked Tablet-arm Chairs
- 14 Stools
- 7 Flip-top Tables 36" High
- Chairs, Stools & Tables are movable
- Windows are present



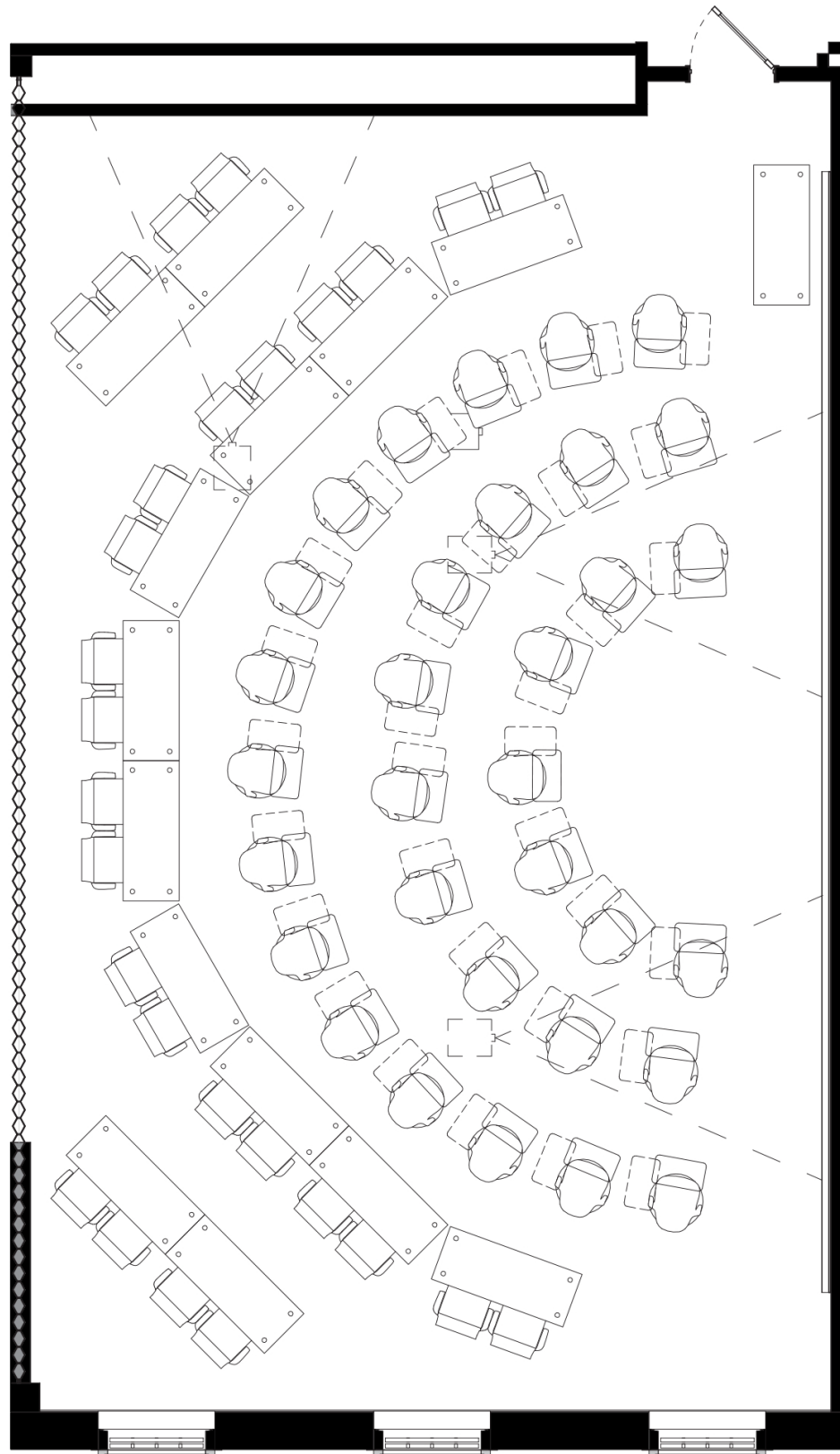
Longfellow-229:

- 18 Tablet-arm Chairs
- 16 Chairs
- 8 Tables 36" High
- Chairs are movable
- Windows are present



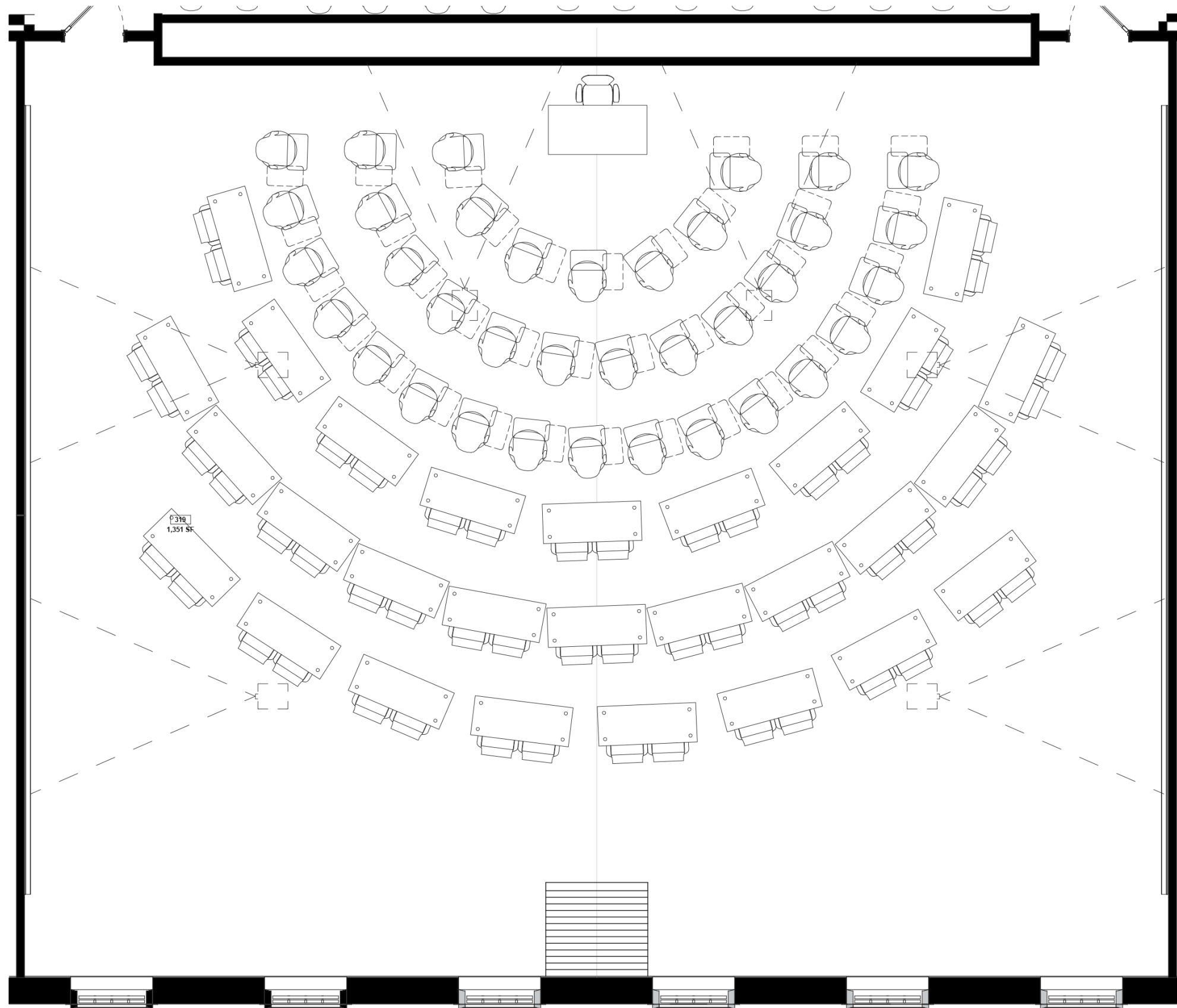
Longfellow-319:

- 32 Tablet-arm Chairs
- 28 Stools
- 10 Flip-Top Tables 36" High
- 4 Flip-Top Tables 42" High
- Chairs, Stools & Tables are movable
- Windows are present



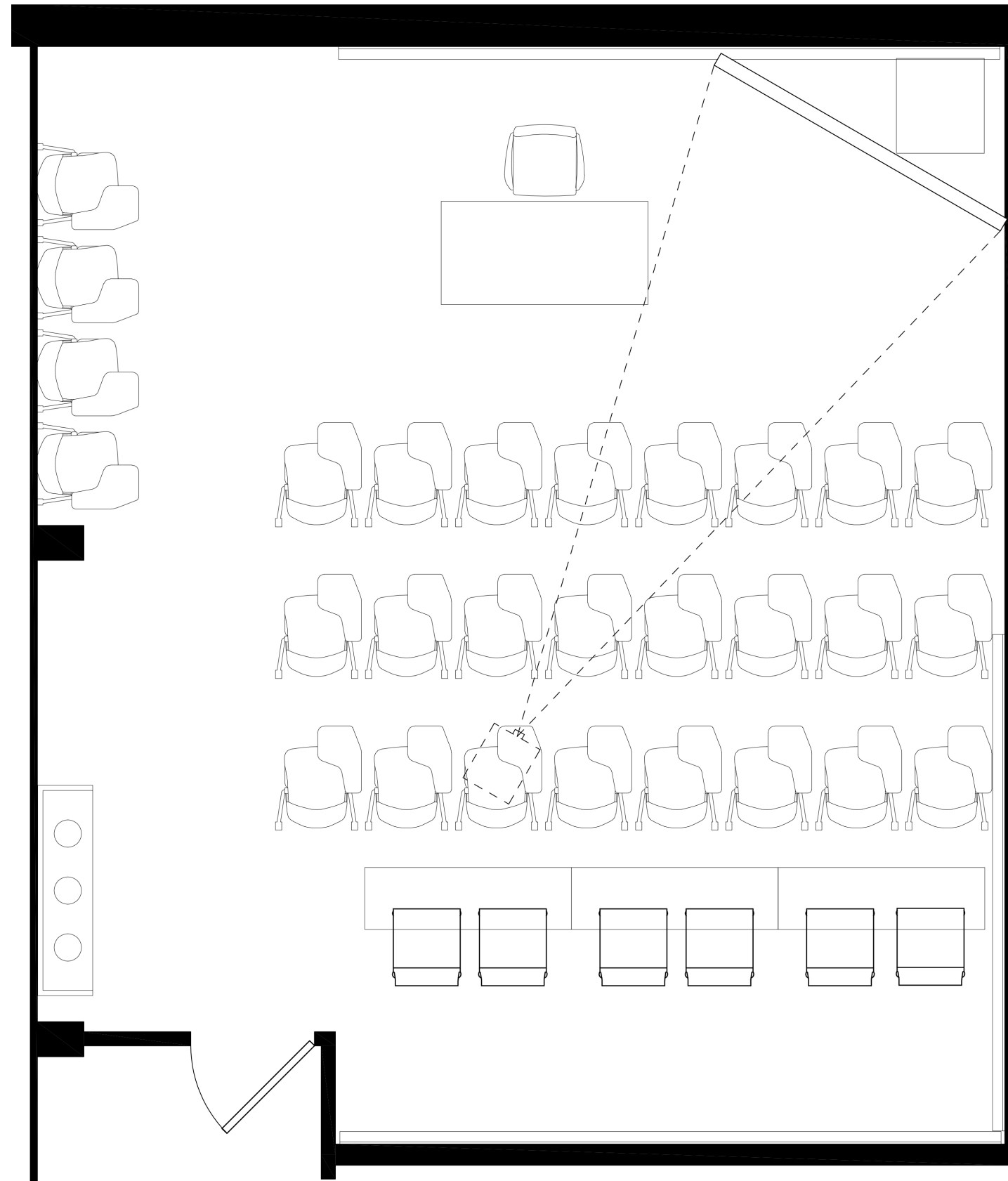
Longfellow-320:

- 32 Tablet-arm Chairs
- 28 Stools
- 10 Flip-Top Tables 36" High
- 4 Flip-Top Tables 42" High
- Chairs, Stools & Tables are movable
- Windows are present



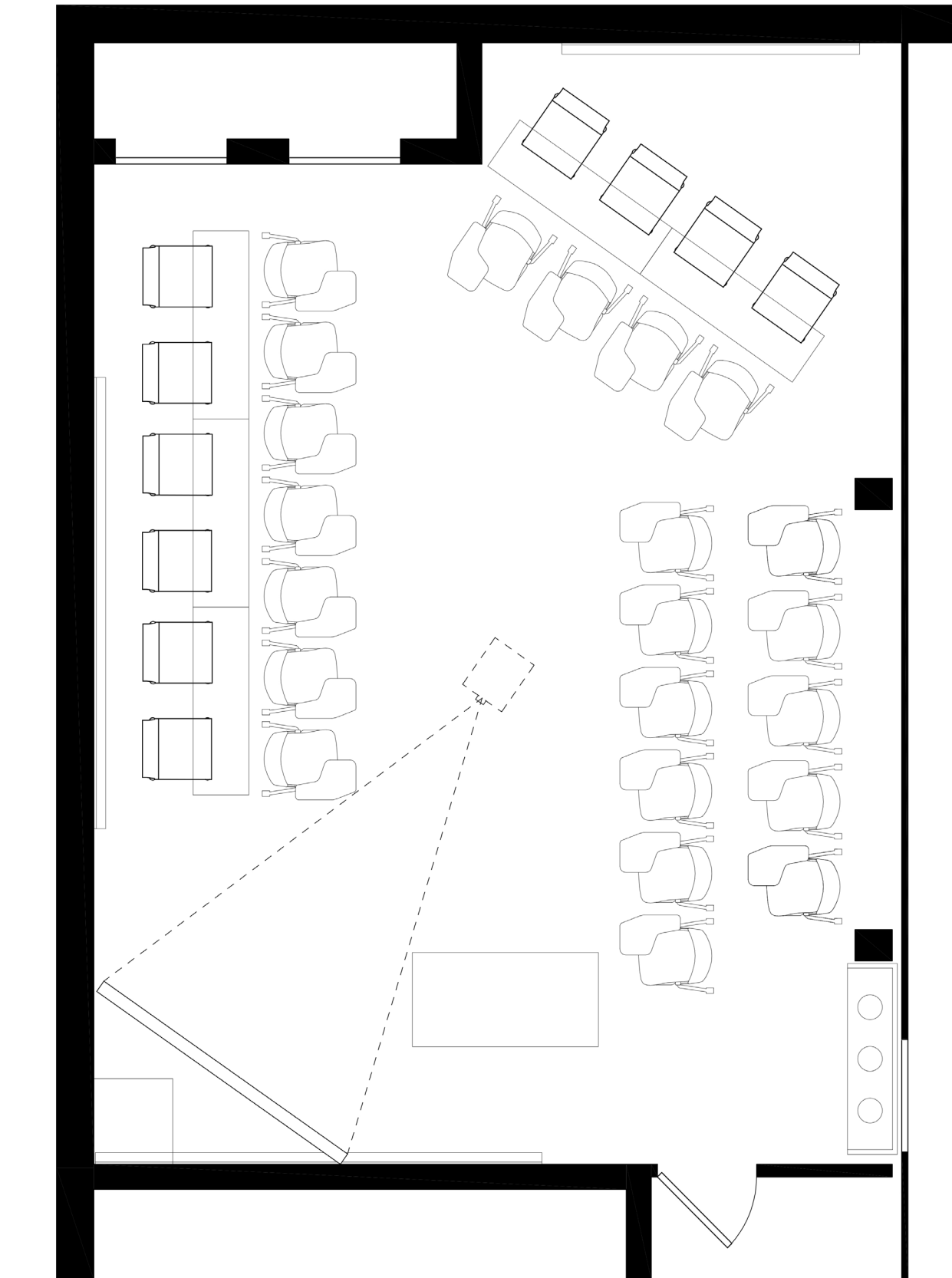
Longfellow-319+320:

- 36 Tablet-arm Chairs
- 56 Stools
- 20 Flip-Top Tables 36" High
- 8 Flip-Top Tables 42" High
- Chairs, Stools & Tables are movable
- Windows are present



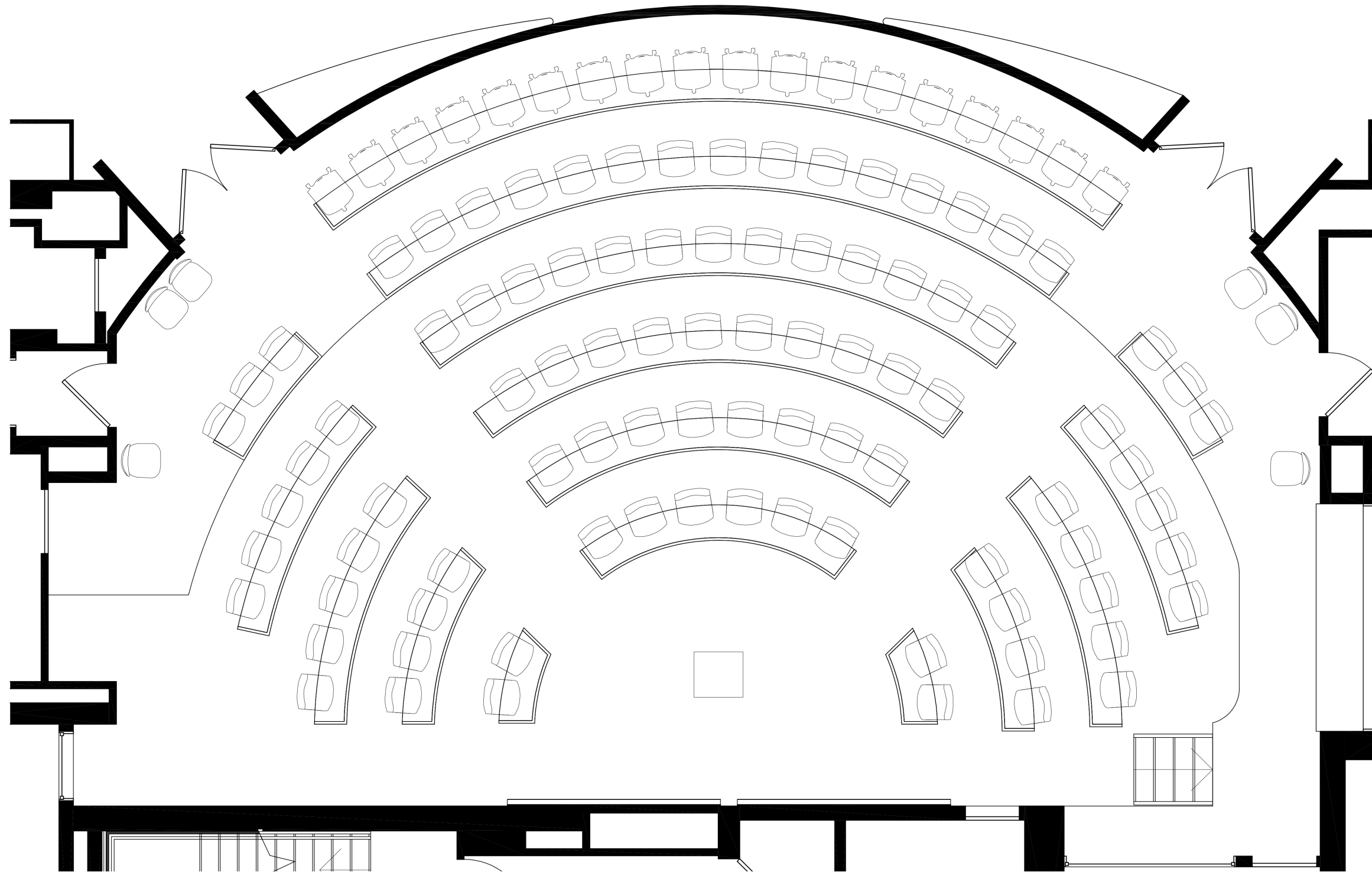
Larsen-G01:

- 28 Tablet-arm Chairs
- 3 Flip-top Tables 36" High
- 6 Stools
- Chairs, Stools & Tables are movable
- Windows are present



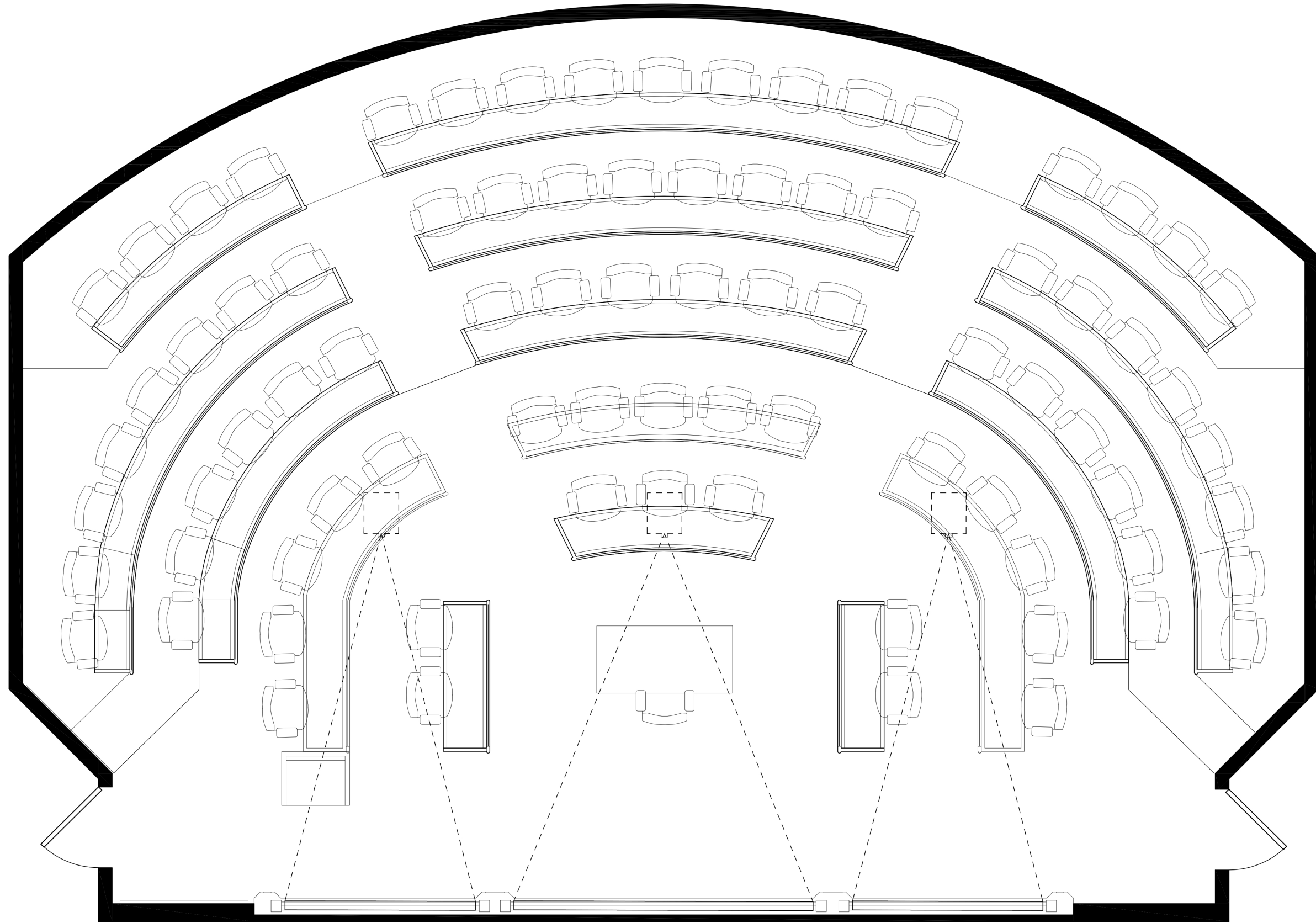
Larsen-G06:

- 22 Tablet-arm Chairs
- 10 Stools
- 5 Flip-top Tables 36" High
- Chairs, Stools & Tables are movable
- Window is present



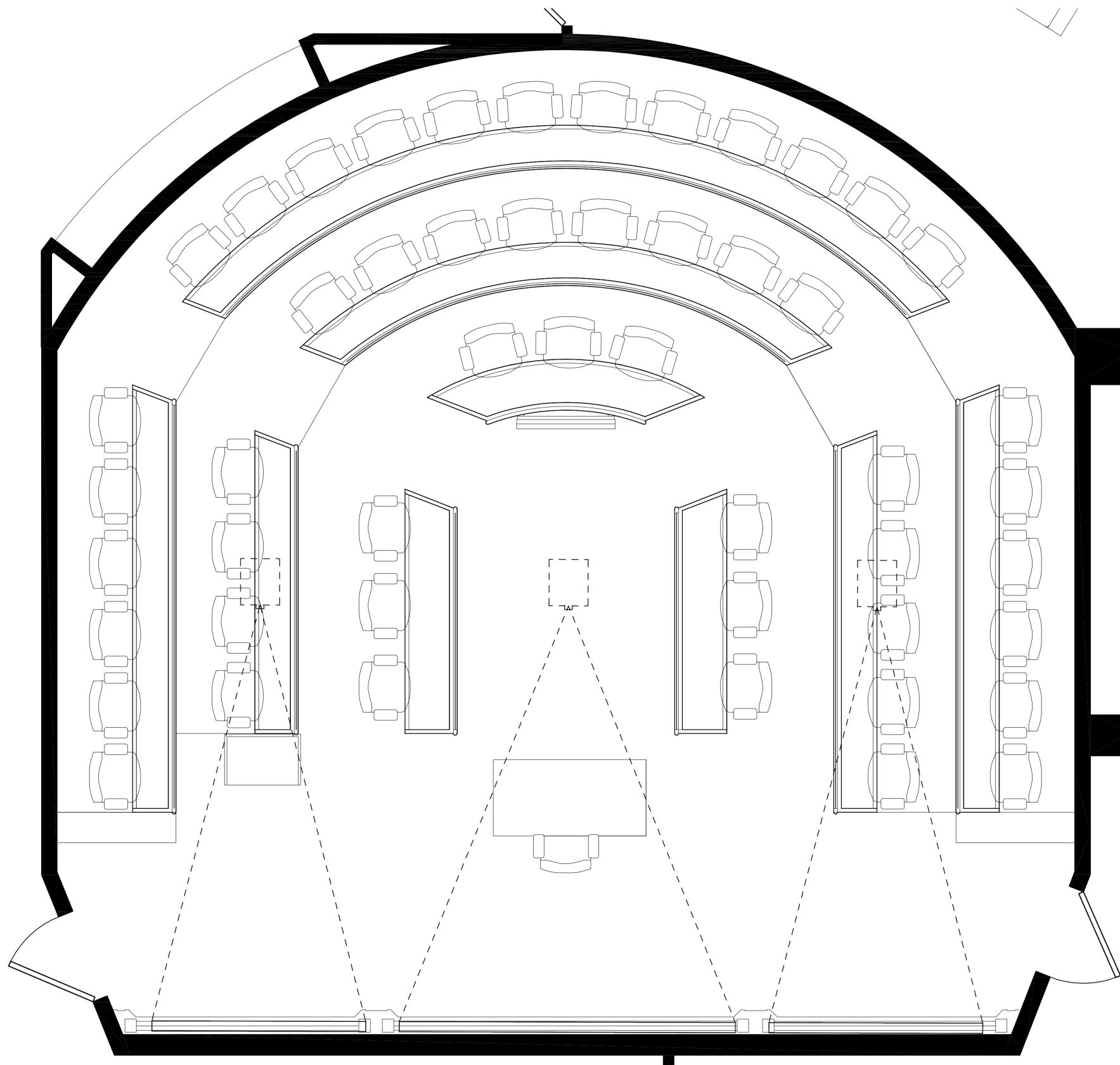
Larsen-G08:

- 114 Chairs
- Chairs are movable
- No Windows



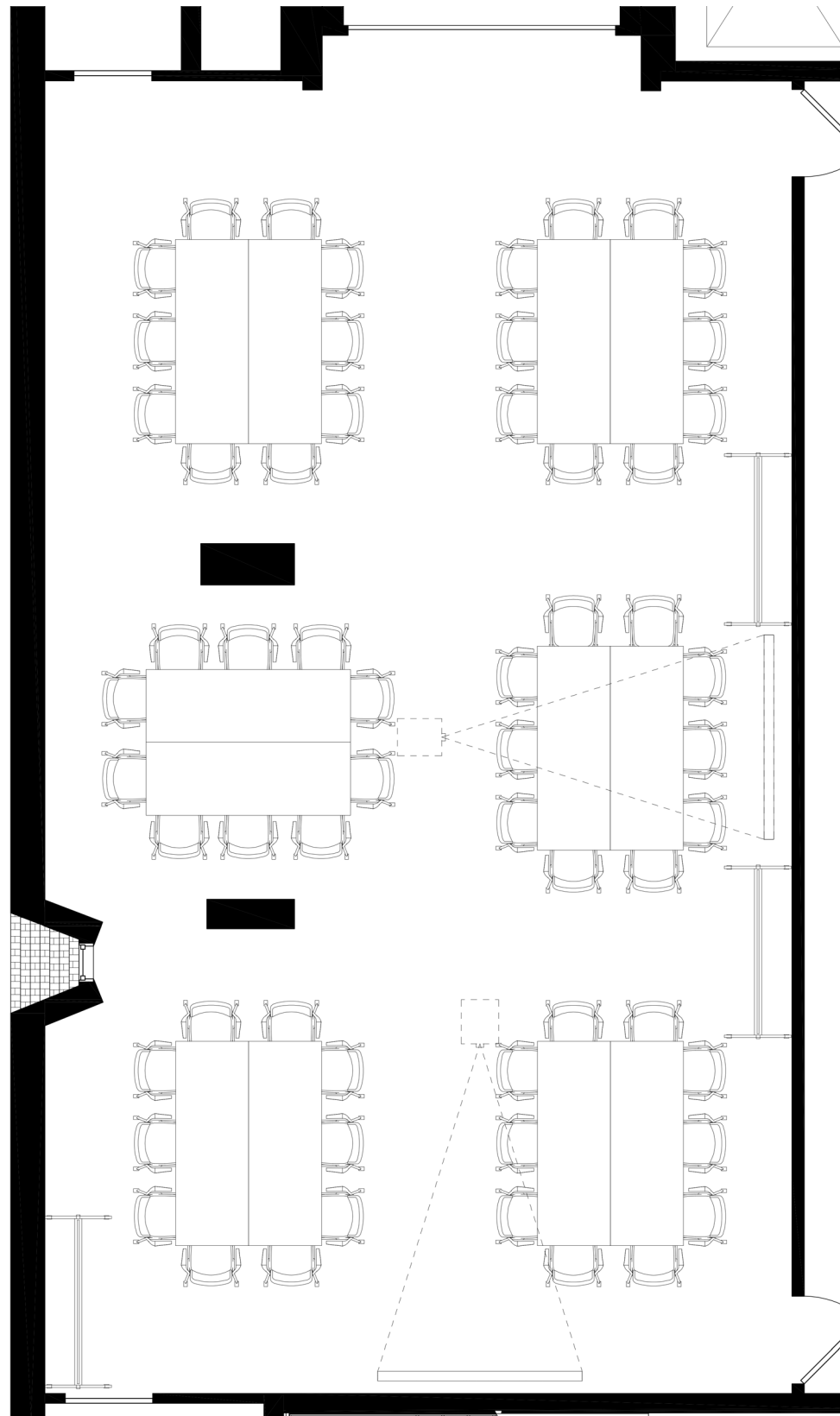
Larsen-106:

- 81 Chairs
- Chairs are movable
- No Windows



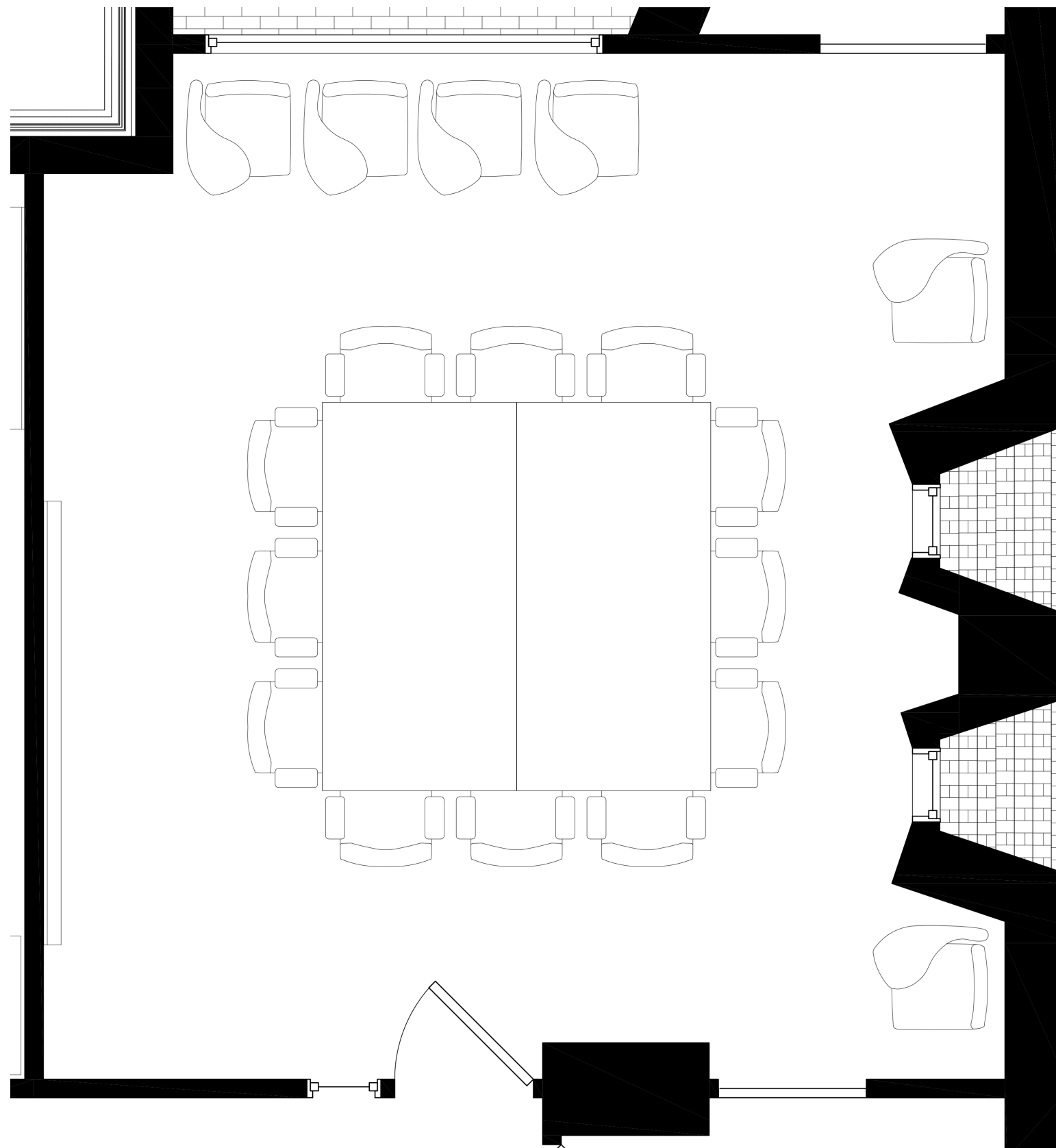
Larsen-203:

- 50 Chairs
- Chairs are movable
- No Windows



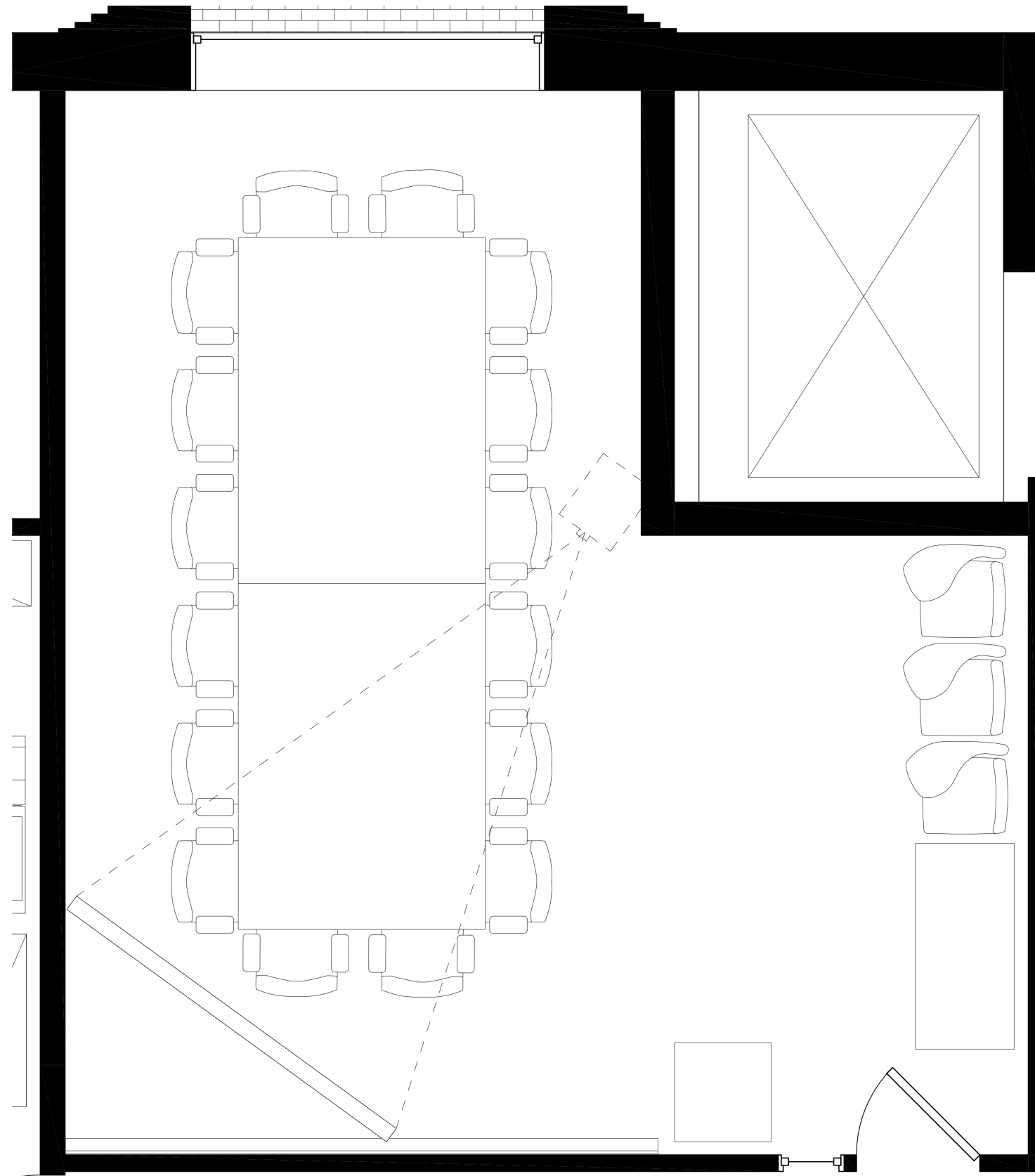
Larsen-214:

- 60 Chairs
- 12 Tables
- Chairs & Tables are movable
- Windows are present



Larsen-402:

- 12 Chairs
- 6 Tablet-arm Chairs
- Chairs & Tables are movable
- Windows are present



Larsen-615:

- 16 Chairs
- 3 Tablet-arm Chairs
- Chairs & Tables are movable
- Window is present